

SCOPING MEETING

The Upper Barataria Louisiana Coastal Storm Risk Management Feasibility Study

Mississippi Valley Division/New Orleans District/Regional Planning and Environment Division South

May 1, 2019 Thibodaux
May 2, 2019 Hahnville



US Army Corps
of Engineers®



NEPA SCOPING PROCESS



Due to the potential impacts to significant resources in the region, a Environmental Impact Statement (EIS) is being developed for this study

Scoping is an important step in the completion of the EIS

Provides an early opportunity for the public and other interested parties to express concerns and suggest alternatives to be considered in the EIS

The Notice of Intent was published in the Federal Register on April 2, 2019

<https://www.federalregister.gov/documents/2019/04/02/2019-06359/intent-to-prepare-a-draft-environmental-impact-statement-for-the-upper-baritaria-basin-la-study>



STUDY AUTHORITY



House of Representatives Docket 2554, 105th Congress (6 May 1998):

In the interest of flood control, navigation, wetlands conservation and restoration, wildlife habitat, commercial and recreational fishing, salt water intrusion and fresh water and sediment diversion, and other purposes in the area

Bipartisan Budget Act of 2018

- (Public Law 115-123), Division B, Subdivision 1, H. R. 1892—13, Title IV, Corps of Engineers-Civil, Department of the Army, Investigations
- Limits scope to flood risk management

3X3X3 Study

100% Federally Funded



COORDINATION



Non-Federal Sponsor

The Coastal Protection and Restoration Authority Board

- Support for engineering, great data source, and stakeholder management

Governmental Stakeholders

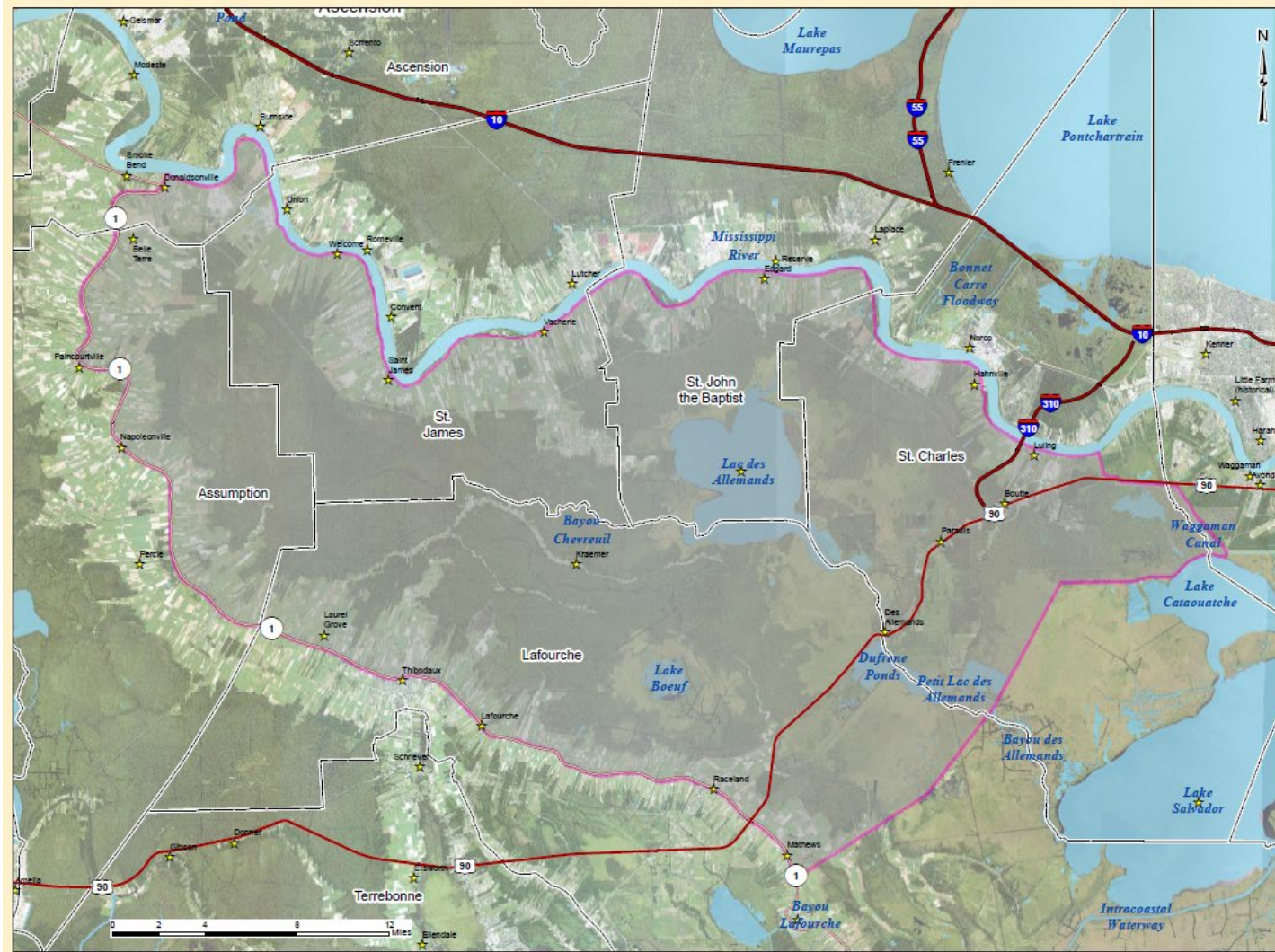
- Tribes
- Natural Resource Agencies
- State of Louisiana and State Agencies
- Parishes
- City Officials



STUDY AREA



The present study area lays between the Mississippi River and Bayou Lafourche and extends from Donaldsonville to just past US-90



**U.S. ARMY CORPS OF ENGINEERS
NEW ORLEANS DISTRICT
Engineering Office**

- ☆ GNIS Placenames
- Interstate Highways
- US Highways
- Louisiana Highways
- - - USACE District Boundary
- ▭ Parish Boundary
- ▭ Barataria Basin Study Area
- ▭ Major Water Features

LOCATION MAP

Projected coordinate system name: State Plane LA South (1702)
 Geographic coordinate system name: GCS_North_American_1983
 Last Modified: 12/28/2018
 EGIS Map ID No. 19-007-001



PROBLEMS



Risk of flood damages to industrial, commercial, agricultural facilities, residential and nonresidential structures within the basin.

Sources of Flooding

- Lower Study Area
 - Coastal Storm Damage
- Upper Study Area
 - Rainfall Damage

Critical Infrastructure at Risk

- US-90
- Government Facilities
- Schools
- Medical Facilities



NO ACTION ALTERNATIVE



Future Without Project Condition- Most likely condition of the resources and human environment if no additional actions are taken as a result of this study

Construction within the Basin

- St. Charles Levee Parish

Increased flood risk

- Sea level rise
- Subsidence

Increased storm damages

- Frequency
- Intensity

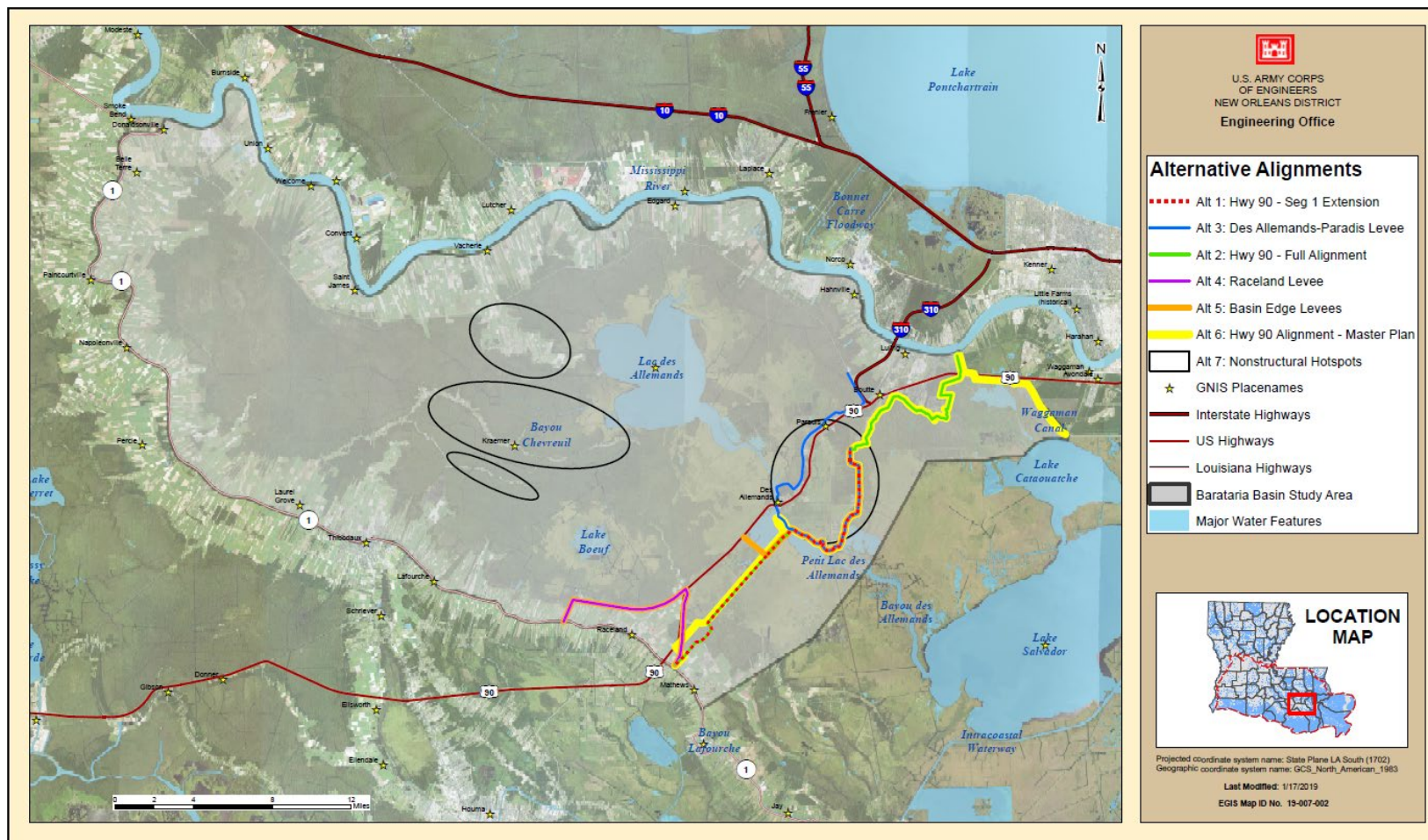


ALTERNATIVES



7 Alternatives Have Been Developed

Assembled with management measures using Formulation Strategies:

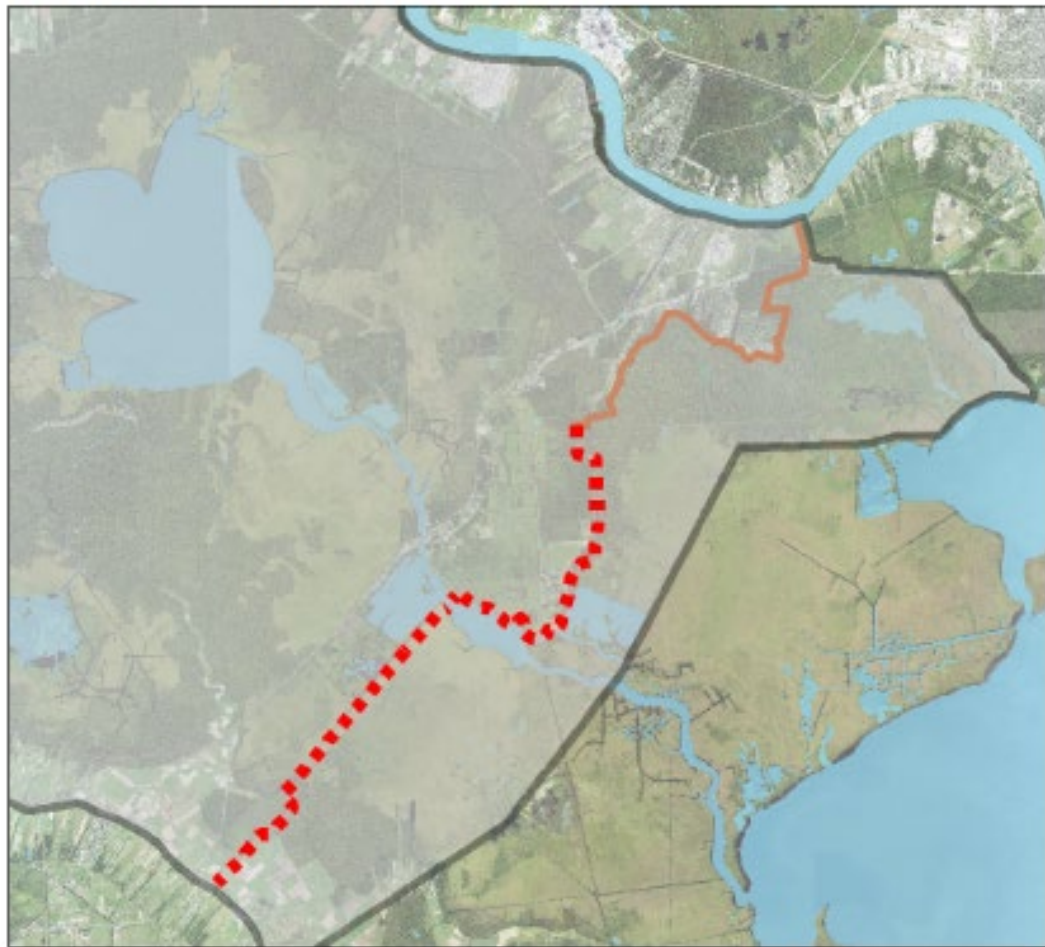




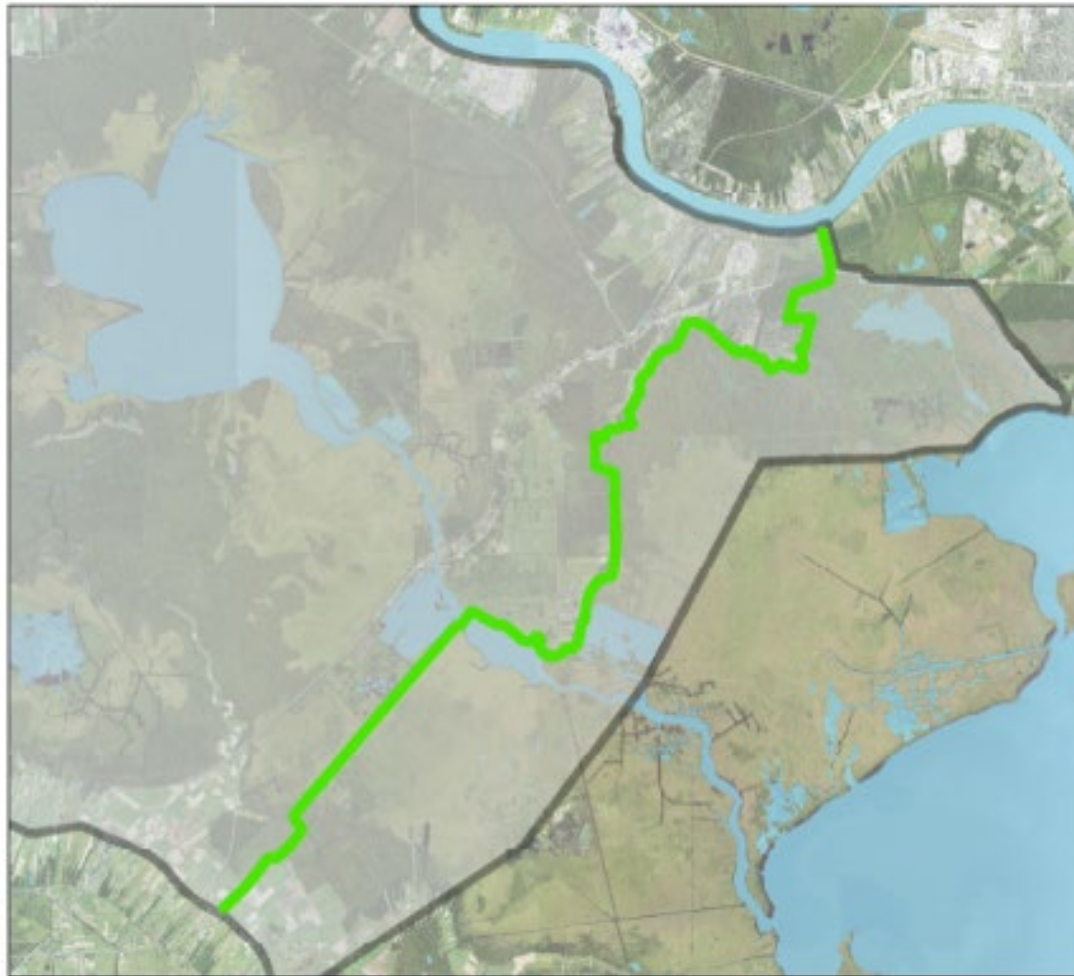
ALTERNATIVES



**Alternative 1
Hwy 90 - Seg 1 Extension**



**Alternative 2
Hwy 90 - Full Alignment**





ALTERNATIVES



Alternative 3 Des Allemands-Paradis Levee

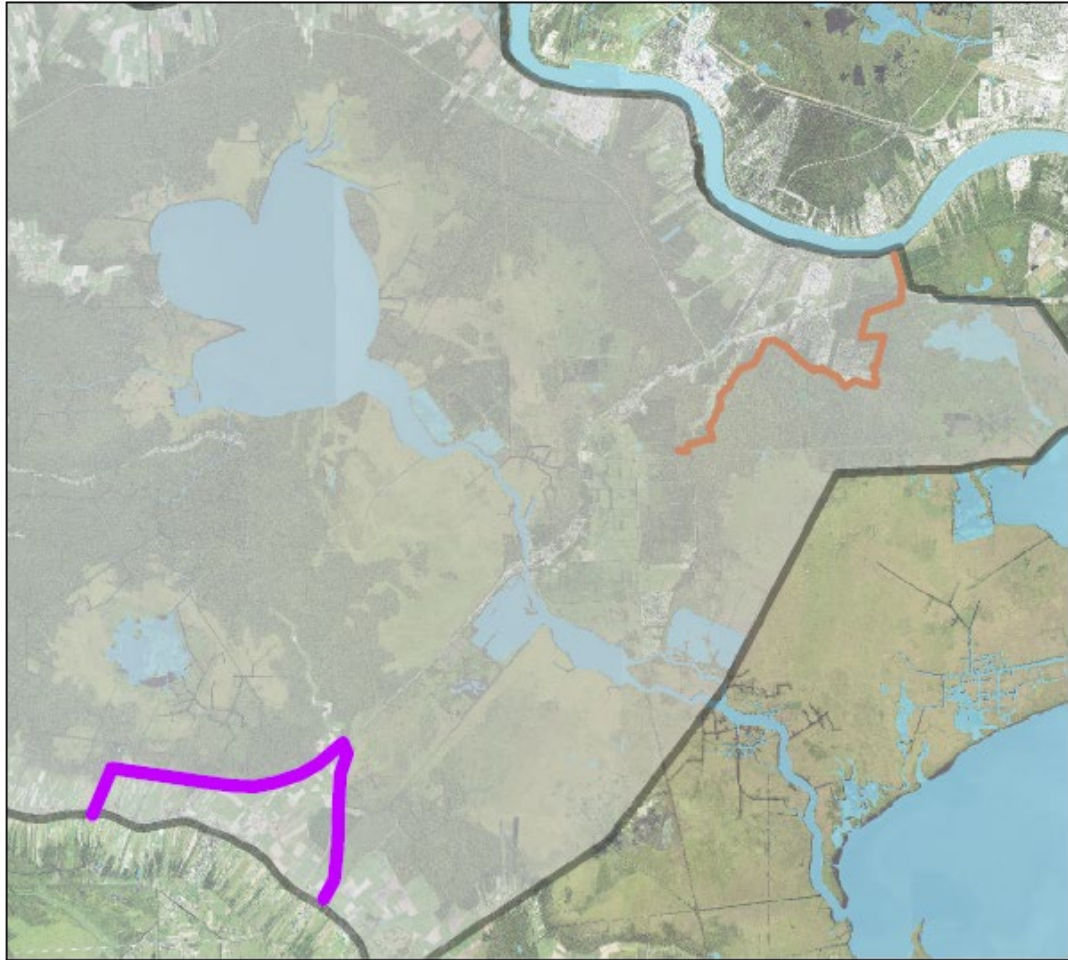




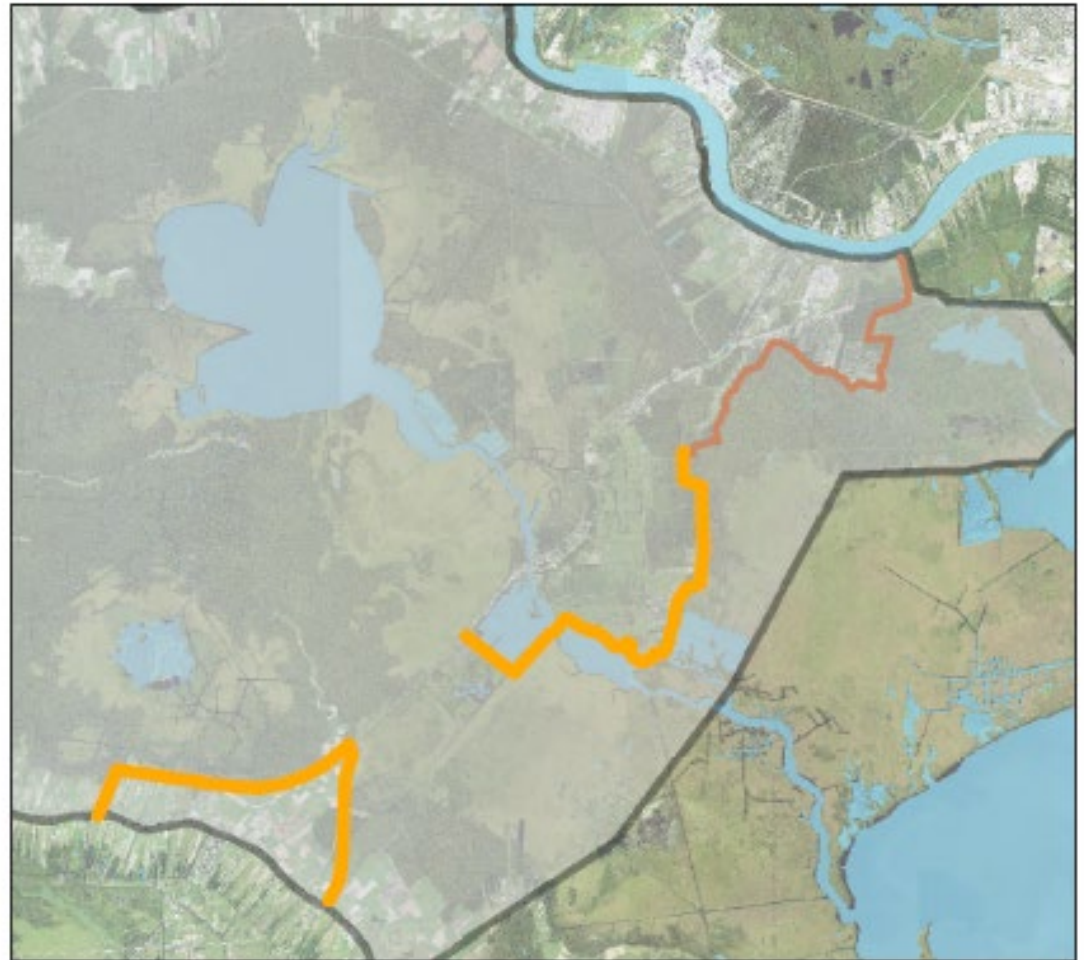
ALTERNATIVES



**Alternative 4
Raceland Levee**



**Alternative 5
Basin Edge Levees**

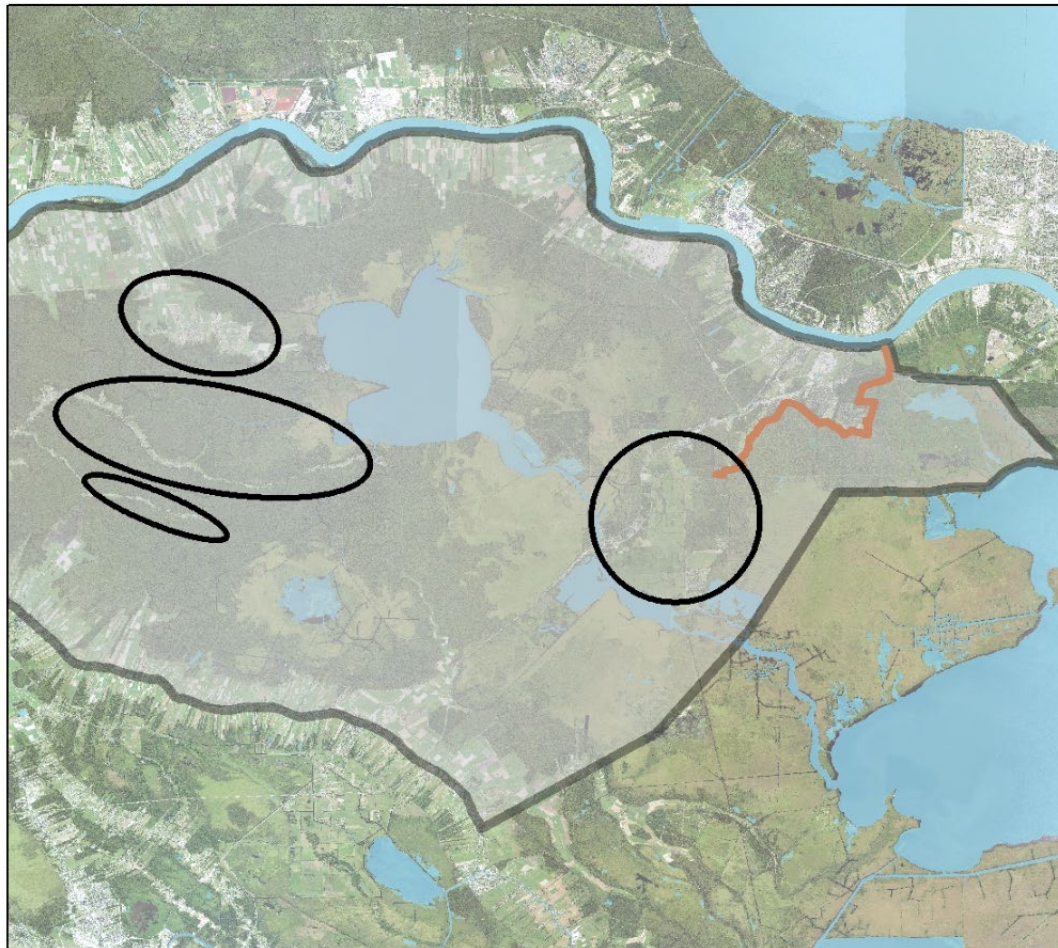




ALTERNATIVES



Alternative 7 Nonstructural Hotspots





RESOURCES TO BE ADDRESSED IN THE EIS



Natural Environment

- Wetlands
- Coastal Zone
- Bottomland Hardwoods
- Cultural Resources
- Fisheries
- Wildlife
- Essential Fish Habitat (EFH)
- Hazardous and Toxic Waste
- Water Quality
- Air Quality
- Threatened and Endangered Species (T&E)

Human Environment

- Noise
- Recreation
- Hydrology and Storm-water
Runoff
- Socio-Economics



SPECIFIC ENVIRONMENTAL CONCERNS IDENTIFIED



Avoid or minimize negative impacts to

– Threatened and endangered species and protected species

- USACE has begun coordination with USFWS and LDWF on T&E species and has established best management practices to address avoidance of impacts to any species present

– Essential fish habitat (EFH)

– Commercial fisheries

– Cultural and historic resources

- There are archaeological sites (prehistoric and historic) that potentially exist
- USACE will work closely with the Tribes and with the State Historic Office to avoid and minimize impacts

– Recreational use in the basin

– Water quality



SCOPING REPORT



- Scoping Report will be written that summarizes the significant issues, alternatives and concerns of the public
- Report used to focus the EIS study on the significant issues and to inform the public
- A copy of the report will be posted on the project website



MILESTONE SCHEDULE



Milestone	Baseline
Execute Feasibility Cost Sharing Agreement (FCSA)	Complete
Alternatives Milestone	Complete
Tentatively Selected Plan Milestone	Fall of 2019
Release of Draft Feasibility Report for Public Review	Winter of 2019
Agency Decision Milestone	Spring 2020
District Submit Final Feasibility Report to MVD	Spring 2021
Division Engineer's Transmittal Letter	Spring 2021
Chief's Report Milestone	Fall 2021



SCOPING QUESTIONS



QUESTION #1: What are the most important issues, resources, and impacts that we should consider in the EIS?

QUESTION #2: Are there any other alternatives or modifications to the existing proposals that we should consider in the EIS?



QUESTIONS?



The USACE encourages full public participation to promote open communication on the issues surrounding the study. Comments may be provided for 30 days after the meetings by the following methods:

- Written comments at the end of each meeting
- E-mail: UpperBaratariaFS@usace.army.mil
- Mail: CEMVN–PMR, Room 331, 7400 Leake Avenue, New Orleans, LA 70118

Information about the study is available online for public review at:

<https://www.mvn.usace.army.mil/About/Projects/BBA-2018/studies/Upper-Barataria-Basin/>